

VARIABLE STAR BULLETIN

No. 8

Nov 1988

OBSERVATION OF WAKUDA'S NEW MIRA TYPE VARIABLE IN CANIS MAJOR

M. Yasuki (Tottori)

The detection of a new Mira type variable in Canis Major was reported by M. Wakuda (1983). He detected it in January, 1983 on photographs taken with 400mm lens and Tri-X film through the yellow-green filters to get visual magnitude. Successive photographic observations made by M. Wakuda and T. Saito with the same instrument and 21cm reflector, respectively, and the same photographic materials revealed the star as a Mira type variable.

I carried out visual observations of this star from that time with 12cm reflector. Figure 1 shows the light variation from 1982 to 1988. The range is thus 9.8-14.0v. The period of the star seems to be 142 days with the provisional elements,

$$\text{Max} = \text{JD } 2446066 + 142^d \times E$$

The position of the star measured by Dr. M. Huruwata is

(RA) 06h31m29s (DEC) -18° 05' .2 (1950.0)

A Finding chart is shown in figure 2, in which v-magnitudes of comparison stars measured by Dr. Huruwata are given without decimal points.

Reference:

Wakuda, M., 1983, Proceedings of the 16th Japan Amateur Astronomers Convention, p16. (in Japanese)

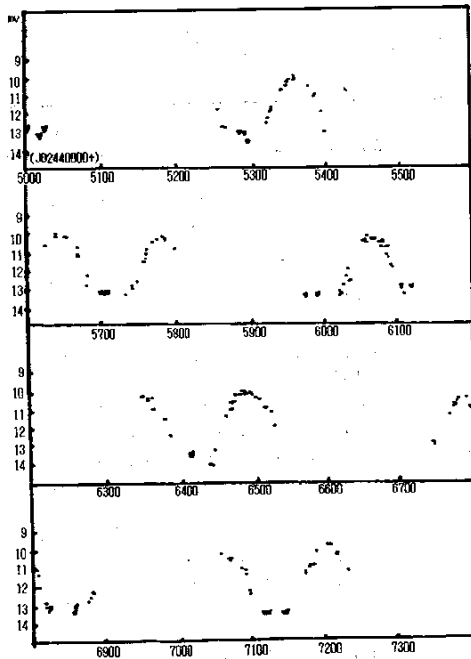


Fig 1 Light variation of 062918 CMa

(062918) CMa

α 6h31m29s (1950.0)
 δ -18° 5' .2

C.I. (B-V) = +2.4^m

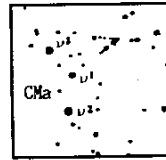
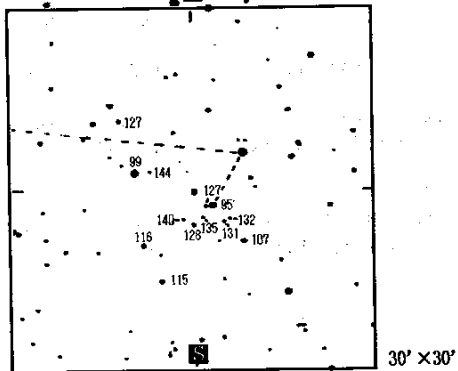


Fig 2 Finding Chart



SUSPECTED VARIABLE STAR
NEAR Z Mon BY Dr. ICHINOHE

S.Sakuma (Kawasaki)

The variability of this star was suspected by Dr.Naozo Ichinohe (1879-1920) about 80 years ago. Dr.Ichinohe is the first variable star observer in Japan,making 12,000 estimates on 232 stars between 1906 and 1911.

The writer is reviewing his observation record in order to prepare Japanese variable star observation data base, and found one suspected variable star in his record.

In 1922, soon after his death, late Mr.Kiyoshi Kanda reviewed the record and got the following conclusion but it was not published.

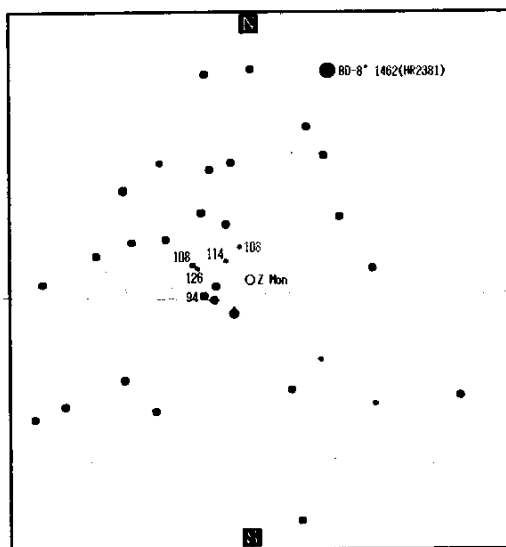
position : $\Delta \alpha +20''$, $\Delta \delta -02'$ (from Z Mon)
 namely $\alpha :08h30m46s$, $\delta :-08^{\circ} 52' .0$ (1950.0)
 range : $10^m.7 - 12^m.4$ (V)
 type ;irregular

Table 1 shows the whole observations carried out by Dr.Ichinohe during Feb.12,1909 to Apr.17,1911.

A finding chart is shown in Figure 1 in which the visual magnitudes of comparison stars estimated by Mr.Kanda are given without decimal point. Further observation are desirable in order to confirm the variability.

TABLE 1

JD 2410000+	Mag	JD 2410000+	Mag	JD 2410000+	Mag
8350.0	10.2:	8745.1	11.6:	9065.0	11.0
8689.0	10.7	8775.0	11.2	9070.122	11.9
8703.0	11.4	8776.0	11.3	9070.129	11.8
8706.2	12.3	8951.2	11.2	9070.143	11.8
8708.1	12.3	8982.1	11.2	9070.155	11.8
8709.0	12.4	8982.3	11.6	9072.1	11.8
8715.2	12.4	9014.1	11.2	9074.0	11.8
8721.1	11.9	9016.3	11.6	9089.1	11.8
8723.0	11.5	9028.0	11.2	9098.1	11.8
8733.0	11.5	9029.2	11.4	9121.0	11.7
8735.1	11.6	9031.2	11.7	9131.0	11.9
8741.0	11.9	9054.1	11.1	9144.0	11.9
8743.0	11.9	9062.2	11.8		



8^m × 2°

Fig 1. Finding Chart

Figure 1. Finding chart.

VARIABLE STAR OBSERVERS LEAGUE
IN JAPAN

NATIONAL SCIENCE MUSEUM
Ueno Park, Taito-ku, Tokyo 110. JAPAN

Editorial advisor	Masaaki Huruhata
Editor	Keiichi Saijo
Associate editor	Seiichi Sakuma, Mitsuo Kanai
Local coordinator	Satoshi Akita, Kikuichi Arai, Sukehiro Fujino Kazuaki Gomi, Kenji Hirosawa, Hisashi Kanazawa Masami Koshiro, Masashiro Moriya, Makoto Watanabe
